

The frantic workload in the industry saw 2004 fly past so this review is quite late. We also missed celebrating a milestone for our practice, 10 years in business, in August 1994. From a base of three people to staff of 15 or more in 2005, we are proud of our achievements. 2004 saw us strengthen the landscape architecture side of the practice. Coupled with our work on the student housing in Education City, we undertook the development design and implementation of the landscape master plan for Education City as well as landscapes associated with other projects, International College Australia (Rhonan O'Brien) and University (PDT).



## 2004 STAFF

- John Deicke
- Peter Richards
- Eloise Atkinson
- Cameron Davies
- Karen Baigent
- Andrew Blow
- Cassie Boyle
- Shem Guthrie
- Tom Kaye
- Arno King
- Simon Maurice
- Magda Myszkowski
- Renae Paulsen
- Tamsin Scott
- Stephen Smith
- Shy Tay
- Luke Watson
- Eddy Kiu Kwong Loong

This year saw us revisit earlier projects of the directors and office including the acclaimed Queensland State Archives designed and implemented by Peter and John whilst at Good Sir Baker Wilde (1989-1992), the Sippy Downs Town Centre for Maroochy Council (2000), the Glenelg Street Master Plan for Southbank (1999) and the Boggo Road Gaol Site (Master Plan, subconsultant to Hassell, 2002). We continued our advocacy for collaborative design workshops with a primary role in the UDALQT Edmonton Design Workshop and a strong support role in the Redland Bay Village Workshop for Petrac. Our role in the broader issues of the profession and region continued. Cameron and Peter were actively involved in UDAL, the Urban Design Alliance. Peter's article on 'Imagining South East Queensland' was published in the AIUS newsletter Urban Briefs. John remained State Convenor of the APE for the Board of Architects. Cameron continued as an assessor for the Board and Eloise remained on the APESMA Board.

Our ongoing relationships with clients and our continued role in implementing projects is highly valued. We are now designing most of the areas for urban growth around Port Macquarie for Hastings Council. With Springfield Land Corporation, we are contributing to a significant new town in South East Queensland with a number of urban design and architecture projects. We continue to work collaboratively with colleagues ESD (Melbourne), Mackay Urban Design (Perth), Conrad Gargett Architecture, Geoffrey Walker, Gall and Medek, Patrick Partners, Webb Australia Group and Biolink.

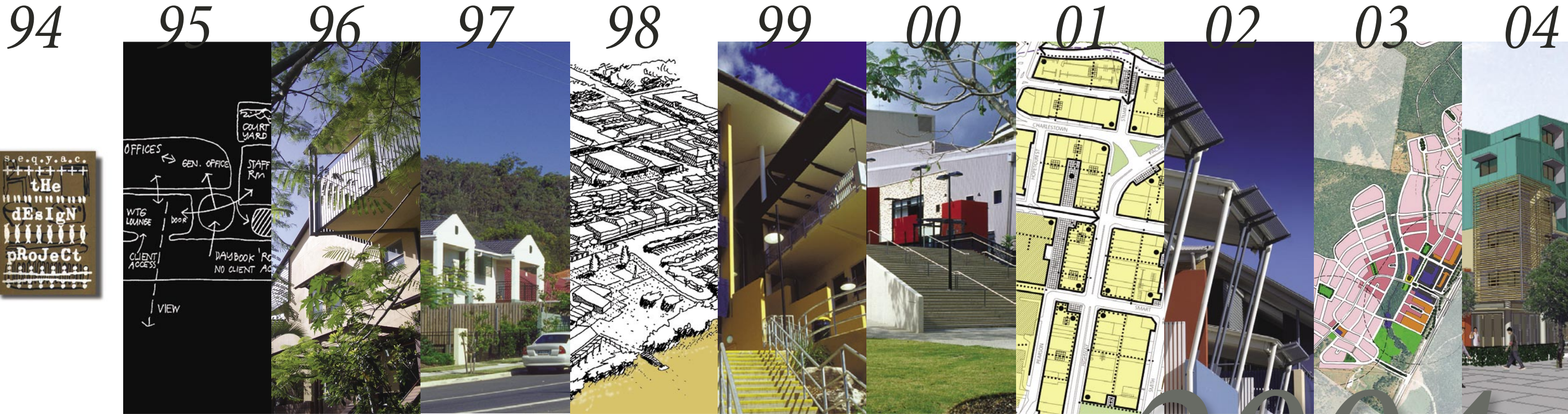
We thank our clients for the opportunities they have given us to work on many remarkable projects and thank our staff for their enthusiasm, commitment and hard work. We enjoy our work and continually seek ways to serve our clients and their projects well, be innovative, improve our skills and learn.

### DEICKE RICHARDS

110 GOTHA STREET  
 CNR BARRY PARADE  
 FORTITUDE VALLEY  
 PO BOX 10047  
 BRISBANE  
 ADELAIDE STREET  
 QUEENSLAND 4000

T 07 3839 4380  
 F 07 3839 4381  
 E mailbox@drarchitects.com.au  
 W www.drarchitects.com.au

# 10 years 1994-2004



# 2004 REVIEW





# 2004...

John & Paula featured in the Courier Mail Home magazine to showcase their work as architects and the completed redecoration of their residence. John also partnered the President of the RAlA to official functions throughout the year. In between official engagements, Peter again combined work in beautiful places and family holidays with a long weekend in Airlie Beach prior to the design workshop. He also reacquired himself with the Norwegian town of Sandefjord with a family visit in June. On the way, he gate crashed a conference at the Princes Foundation. He also attended his first NU Council and a SmartCode Workshop in San Diego. Eloise was pleased to receive council approval for the renovations to her family home and is looking forward to building in the coming year. Cameron toured Australia for 3 months after the birth of wonderful daughter Thea earlier in the year, and conceived child number two, due to arrive in August 05.

Arno graduated with a Graduate Diploma of Urban Design from QUT and became a representative on the Australian Centre for Lifestyle Horticulture. Renae continued her quest to complete an architecture degree at QUT and successfully completed 4th year. She was also reminded of how varied the Australian climate is when she visited Tasmania for the first time to attend an architecture conference...in June. Shem sat and passed the Board of Architects registration exams. He is back into road racing and rejoined the Flight Centre squad and now sports some very white lycra livery. He was also elected a committee member for the Queensland WRX Club and is regularly involved with all things Subaru and turbo charged. Tom continues to study architecture at QUT in the mistaken belief that he will be relieved of IT duties. He has taken up rock climbing as a slightly more strenuous sport than golf, and enjoyed a trip down to Tasmania with the scouts to do just that. After many overseas travels in previous years, Magda has explored some of Queensland's travel destinations, and later in the year surprised us with news of expecting a baby. Karen's home appeared in the Courier Mail Home magazine and she checked out the architecture during her travels in Japan and Tasmania.

Cassie quickly settled into the DR way of life and in between spiking beach volleyballs and kicking goals in indoor soccer, was lucky enough to visit tropical North Queensland's Airlie Beach and Cairns for a couple of the office's design workshops. Andrew worked on the design of his Mt Nebo dream home, completed the RAIA PALS course and took up tango dancing under the tutelage of Arno King. Tamsin joined the practice on a contract basis assisting Arno with the landscape. Her garden design featured as a full page spread in the Courier Mail Garden Supplement. Simon continues to study architecture at QUT while trying to find time to play with his band. They plan to release a demo some time this year. In between his coaching responsibilities with the GPS Rugby Club and trying to complete his Masters in Urban Design, Stephen is still renovating the smallest house in Brisbane...he will finish the house...one day. Shy completed his architecture degree after ten years of perseverance. Along the way he collected the Head of School Award, RAIA - QIA Medallion and Board of Architects of Queensland Prize. Luke worked and continued his studies at UQ during the year as well as helping out with all things IT in the office.

## Rochedale Urban Community URBAN DESIGN MASTER PLAN



Rochedale Urban Community is a flagship project of Brisbane City Council where about 1,700ha of land, one of the remaining development areas on the boundary of the City of Brisbane and Logan City, is to be urbanised. Deicke Richards were lead consultants in preparing an urban design Master Plan. The project delivered a sustainable urban outcome that provides a good variety, diversity and density of housing, with a jobs balance and capitalises on the proximity of the South East Busway and Eight Mile Plains bus station.



## Glenelg Street MASTER PLAN

The Master Plan continued earlier work for Southbank Corporation and formed part of a wider initiative to redefine the three major street connections to the Southbank Parklands that pass under the existing railway and busway. The Glenelg Street entrance axis plays a critical role in the sequence of arrival to the Parklands from both the Convention Centre and Musgrave Park. The solution included a combination of elements providing visual linkages through and over the bridge, weather protection and ease of pedestrian movement.

Cameron Davies, Shem Guthrie, Peter Richards, Eddy Kiu Kwong Loong



## Redland Bay Village DESIGN WORKSHOP

The former University of Queensland Research site at Redland Bay was the location for this innovative project, by developer Petrac, for a diverse retirement community that is integrated with its surrounds and acts as a focal point for the Redland Bay community. The design was conducted on site during a two and a half day Enquiry-by-Design Workshop.

Peter Richards, Cameron Davies



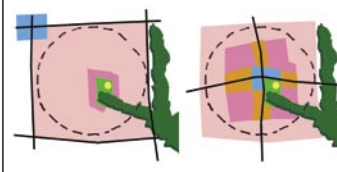
## Grey Street PUBLIC REALM IMPROVEMENTS



Grey Street public realm improvements continued the Glenelg Street entrance precinct along Grey Street. Undertaken with Webb Australia Group, the work investigated the upgrading of the Grey Street lighting, and improving pedestrian links between Glenelg St and Russell St. The edge of the Griffith University Conservatorium of Music building was enlivened to create a better urban interface. The proposal included bold new cantilevered steel frames over the footpath and the upper level entry of QCOM integrating improved lighting.

Cameron Davies, Shem Guthrie, Peter Richards, Shy Tay

## Sustainable Urbanism In Regional Australia... BEYOND THE TRADITIONAL NEIGHBOURHOOD



This presentation formed part of the Gold Coast City Council's urban design seminar series as a response to a lecture by Demetri Barches of DPZ Pacific on the traditional neighbourhood. The focus was on the differences between Australian and American practice for a sustainable urbanism rather than a traditional urbanism. Projects by the office for KingsHill, Port Stephens and Plantation Palms, north Mackay, showed how Deicke Richards has applied these principles.

Peter Richards



## Springfield Parkside Business Precinct AREA DEVELOPMENT PLAN

The Parkside Business Precinct is a high density mixed-use precinct within the emerging Springfield Town Centre. It is a new major commercial and civic centre for South East Queensland recognised in the new Regional Plan. The precinct provides a thriving commercial presence and large residential community set within quality parkland and natural bushland. It includes civic buildings and high quality public gathering places with distinctive form that are seamlessly linked to their surroundings. The Area Development Plan for Springfield Land Corporation provided a detailed design of the precinct and included the statutory planning documents.

Cameron Davies, Peter Richards, Stephen Smith, Arno King, Renae Paulsen, Tom Kaye

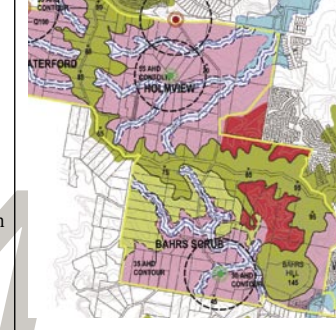
## Plantation Palms NEIGHBOURHOOD PLANS



Plantation Palms will evolve as the inner urban neighbourhoods of the emerging new town of Northern Beaches to the north of the Queensland regional centre of Mackay. The site is remarkable with gentle topography, some hill tops with significant views and a large wetland to the east. The broad scope of work included the preparation of the overall master plan, configured as a series of distinctive neighbourhoods, with detailed plans for neighbourhood design, building type and character.

Peter Richards, Stephen Smith, Cassie Boyle, Simon Maurice

## Beenleigh VISUAL ASSESSMENT



This work, for Gold Coast City Council, involved a visual assessment and site analysis to inform planning provisions to guide development. The site was analysed in terms of image and views and a number of distinct landscape districts with different landscape values were identified. The landscape heritage of the study area, issues and constraints were highlighted, analysed and integrated into recommendations that also included landscape management.

Arno King, Cameron Davies, Renae Paulsen, Simon Maurice

## Springfield STUDENT HOUSING

The residential precinct, associated with the Springfield Town Centre University Campus, creates a vibrant mixed-use area focusing on an informal commercial and social hub for residents and the general community. This pedestrian area provides commercial and service facilities including a bar, large eatery, as well as a post office and convenience store. The housing runs around the perimeter of the site creating a lush inner courtyard, divided by pedestrian walkways, into two distinct spaces including a contemplative space and an active pool area. The accommodation includes a number of different apartment types ranging from two to five bedrooms. Each facade addresses a street or courtyard area with a different scale and character, reflected in the treatment of balconies and materials.

John Deicke, Eloise Atkinson, Shem Guthrie, Shy Tay, Tom Kaye, Lake Watson, Arno King, Eddy Kiu Kwong Loong



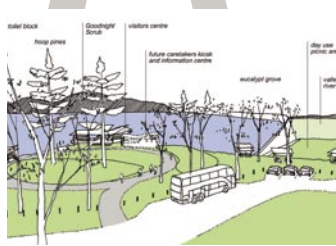
## Edmonton, Cairns URBAN DESIGN WORKSHOP



On behalf of UDAL, Deicke Richards along with other UDAL colleagues assisted Queensland Transport in undertaking a design workshop for a significant new urban centre in Edmonton to the South of Cairns within the proposed southern busway corridor. The workshop investigated a number of design scenarios to integrate a new bus corridor and bypass road into a developing urban centre and will act as a springboard for future planning studies.

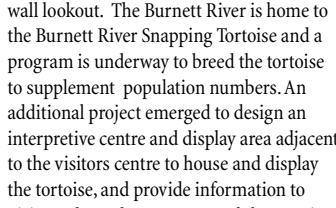
Cameron Davies, Cassie Boyle, Peter Richards

## Burnett River Dam RECREATIONAL AND INTERPRETIVE FACILITIES



The Burnett Dam Alliance are currently constructing the Burnett River Dam, 80km south west of Bundaberg, in the former gold mining town of Paradise. The dam will supply water for agriculture, industrial and urban use. For Alliance member SMEC, we identified and designed the recreational and interpretive facilities for the dam environs. This comprised seven specific sites each with their own unique characteristics and potential, including a visitors centre, boat ramp, camping area, heritage trails around the remnants of Paradise town and a dam wall lookout. The Burnett River is home to the Burnett River Snapping Tortoise and a program is underway to breed the tortoise to supplement population numbers. An additional project emerged to design an interpretive centre and display area adjacent to the visitors centre to house and display the tortoise, and provide information to visitors about the program and the tortoise.

Shem Guthrie, Arno King, Tom Kaye



Shem Guthrie, Arno King, Tom Kaye

## Sippy Downs Town Centre URBAN DESIGN ADVICE

The Sippy Downs Town Centre is a mixed use urban centre, adjacent to the University of the Sunshine Coast. Deicke Richards led the consultant team for the Master Plan of the Town Centre for Council in 2000. Increased development interest has prompted a number of specific development proposals for the site. We provided urban design advice to one proponent, William Hamilton and his consultants Bligh Voller Nield for the main retail and mixed-use focus of the town. This covered interpreting the intentions of the planning scheme, circulation networks, the quality of the public realm, built form interfaces and integration of uses.

Peter Richards, Cameron Davies, Cassie Boyle



## Airlie Beach STRUCTURE PLAN & STRATEGIC FRAMEWORK

Whitsunday Shire Council engaged a consortium headed up by Deicke Richards and Mackay Urban Design to deliver an Urban Structure Plan for the four settlements of Jubilee Pocket, Airlie Beach, Cannonvale and Cannon Valley which make up the Town of Whitsunday. Faced with housing pressure for growth, the Structure Plan aims to provide opportunities for expansion while maintaining the significant natural beauty of the area. The Structure Plan provides guidance for built form and landscape elements to ensure an appropriate character is maintained which reflects the uniqueness of the locality and its setting.

Peter Richards, Stephen Smith, Cassie Boyle, Simon Maurice, Arno King



John Deicke, Cameron Davies, Shy Tay, Peter Richards, Simon Maurice, Tom Kaye, Lake Watson, Arno King



## Clinical Sciences 2, Griffith University EDUCATION



The second stage of the Health Sciences precinct on the Gold Coast Campus of Griffith University will be the new Clinical Sciences 2 Building. The building has been designed, in association with Conrad Gargett, to complement the recently completed Clinical Sciences 1 Building and forms the gateway to the future Health Sciences precinct. The building accommodates the Schools of Nursing and Pharmacy as well as providing dry anatomy for the new Medical School located at the Gold Coast Hospital. The most prominent view of the building, from the north east, has an expressive and visually animated architectural composition giving Clinical Sciences 2 good exposure and presence within the Gold Coast campus.

John Deicke, Cameron Davies, Andrew Blow, Tom Kaye, Eddy Kiu Kwong Loong

## Springfield DATA CENTRE



The Call and Data Centre is one of the key catalyst projects for the Springfield Parkside Business Precinct. The building includes a clear span Call Centre on the upper level and CITEC and Telstra facilities on the lower levels. The climatically responsive building is integrated into the fabric of the precinct and contributes to the activity of the Town Centre.

John Deicke, Cameron Davies, Shy Tay, Peter Richards, Simon Maurice, Tom Kaye, Lake Watson, Arno King



## Fairview Rise NEIGHBOURHOOD PLAN



This development of 160 residential lots for the Defence Housing Authority exploits the natural topography of the site to create a new neighbourhood well connected and integrated into the existing community. Through the retention and enhancement of drainage corridors and sensitive landscape treatments, this new development creates strong visual axes, and community focal points providing strong neighbourhood identity.

Stephen Smith, Simon Maurice, Arno King

## Area 13 STRUCTURE PLAN



The Area 13 Urban Investigation Area has been identified by Hastings Council as an expansion area to cater for the increasing growth in Port Macquarie. Deicke Richards were lead consultant in the preparation of a Structure Plan for the greenfield site which contains a varied pattern of visually and environmentally sensitive landscapes. The Structure Plan seeks to achieve a sustainable outcome for the Investigation Area that balances the needs for population growth and environmental protection.

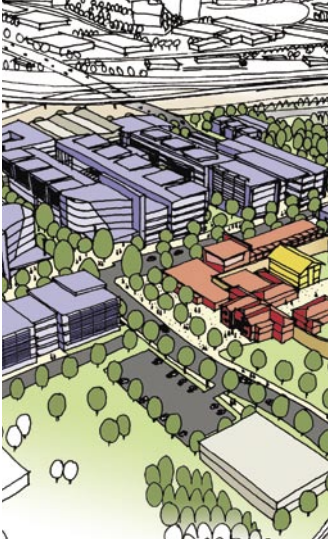
Stephen Smith, Peter Richards, Cassie Boyle, Simon Maurice

## Springfield PEDESTRIAN BRIDGE



The new Springfield Town Centre Park will provide a unique and valuable bush reserve to the precinct. To connect the proposed education and commercial precincts a pedestrian bridge is required through the park and over Mountain Creek. The bridge responds to the needs of both Springfield Land Corporation and Ipswich City Council and is of lightweight steel portal construction with local stone buttressed landings. End and mid point pergola structures provide pausing and viewing opportunities for the user.

Shem Guthrie, John Deicke, Cameron Davies, Tom Kaye, Arno King



## CSIRO Boggo Road Precinct MASTER PLAN

This Master Plan for CSIRO developed a high quality research and development precinct on the existing Boggo Road Gaol site. The precinct included knowledge based research facilities, a mixed use retail precinct and a museum in the historic gaol buildings.

Cameron Davies, Shy Tay

## Arthur Terrace, Red Hill MEDIUM DENSITY HOUSING



The project, for Azuno Developments and Munro Group, is now complete and on the market. The design demonstrates how medium density housing can use a detached housing typology on inner city infill sites. The detached form is sensitive to the surrounding historic context as individual buildings can readily respond to the slope of the land minimising site impacts. The designs have contemporary character that is respectful of the traditional Queensland, three of which were integrated into the project including the original farmhouse that was restored.

John Deicke, Peter Richards, Cameron Davies, Shem Guthrie, Magda Myszkowski, Lake Watson, Shy Tay



## West End VIEW SHED ANALYSIS



Brisbane City Council commissioned this study to assess the impacts on views within West End by new development. A number of key precincts were identified which have a distinctive character and should be maintained through refining and enhancing key elements of the landscape. There are views to some key landmarks within the study area - the Brisbane River, Mt Coot-tha, the Taylor Ranges and the CBD which need to be preserved with appropriate design controls.

Arno King, Tamsin Scott, Stephen Smith, Simon Maurice

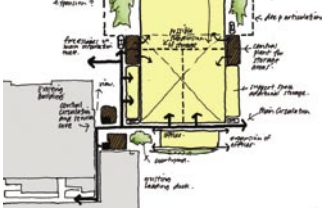
## Subtropical Neighbourhood DESIGN PRINCIPLES



This unique research project on neighbourhood design principles for the subtropics was commissioned by the Centre for Subtropical Design, a joint initiative between QUT and Brisbane City Council. A literature review of planning and policy documents and analysis of case study neighbourhoods, developed eight principles for subtropical neighbourhoods.

Peter Richards, Eloise Atkinson, Stephen Smith, Cassie Boyle, Renae Paulsen, Arno King

## Queensland State Archives EXPANSION FEASIBILITY



This acclaimed Queensland State Archives, designed by Peter Richards and John Deicke at Goodsir Baker Wilde, was completed in 1993 just prior to the commencement of Deicke Richards. This project, for Project Services, investigated the substantial extension of the building to provide more storage space and offices. The extension was conceived as a complementary building that attaches itself to the main building in a location that was generally allowed for in the original building.

Peter Richards, Cameron Davies, Tom Kaye

## Grafton Shoppingworld

Urban design advice on the integration of a shopping mall into the historic Town Centre.

McConaghy Group, Peter Richards, Cassie Boyle, Simon Maurice

## Clarenza Villages

Urban expansion of Grafton as two rural villages.

Peter Richards, Cassie Boyle, Simon Maurice

## Tullimbar Architecture

Housing types for the new village of Tullimbar, south of Woollongong.

Miltonbrook, Peter Richards, John Deicke, Cameron Davies, Arno King, Simon Maurice

## Brookwater Village Centre

Urban design proposals for the Brookwater Village Centre.

Springfield Land Corporation, Peter Richards, Cassie Boyle

## Brookwater Glade

New neighbourhood concept plan. Precinct Plan for a Child Care Centre.

Springfield Land Corporation, Peter Richards, Stephen Smith, Renae Paulsen, Arno King

## Tewantin

Future development form analysis for the Tewantin Centre and Main Street.

Noosa Shire Council, Stephen Smith, Peter Richards

## Yamanto Centre

Urban design concepts for a vibrant commercial centre on the southern edge of Ipswich.

Stockwell, Peter Richards, Cassie Boyle, Simon Maurice

## Logan City Council Precinct Master Plan

Master planning options for the future expansion and consolidation of the existing Council precinct.

Logan City Council, Cameron Davies, Peter Richards, Cassie Boyle, Arno King

## North Quay Refurbishment

Foyer refurbishment for an inner city office building.

183 North Quay Body Corporate, John Deicke, Magda Myszkowski

## Bowen Hills Public Housing

Inner urban high density housing. Department of Housing

Leybourne Street, John Deicke, Eloise Atkinson, Andrew Blow

## Bratt Lentz and Katie Daley

Shem Guthrie

## CBD Broadbeach

Urban design advice on the built form and contextual response to a high density mixed-use development.

South Sky Developments, Peter Richards, Cassie Boyle

## Rode Road

New community for fifty families incorporating parkland and water sensitive urban design principles.

Defence Housing Authority, Cameron Davies, Tom Kaye, Lake Watson

## Caloundra Industrial Park

New business and industry precinct. Department of State Development and Innovation

Peter Richards, Simon Maurice, Eddy Kiu Kwong Loong